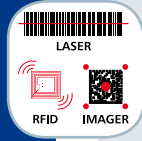


The Industrial PDA



HIGHLIGHTS

• MAKES WORK EASIER

Datalogic JET™, the powerful Datalogic PDA with state-of-the-art architecture and the most advanced technologies, provides the most suitable power levels for capturing, computing and communicating data faster and easier.

• FULL CONNECTIVITY

The Datalogic JET™ offers superior wireless simultaneous communication capabilities (WLAN, WWAN and WPAN) in the same and ergonomic form factor.

• IDEAL FOR ANY APPLICATION

The Datalogic JET™ presents mobile professionals with the most relevant features needed to operate in demanding environments: reliability, ruggedness, drop resistance, long lasting batteries, flexible communication and efficient data capture. In addition to the highest robustness and reliability in its class, other key features of the Datalogic JET™ include fully integrated automatic data capture (bar codes, RFID tags and images).

• A COMPLETE SOLUTION

Thanks to a set of accessories, such as a vehicle cradle (standard and loud speaker), cigarette lighter power adapter and dashboard mounting kit, combined with state-of-the-art technology inside the PDA, the Datalogic JET™ is the right answer for all data management needs on the move.

• INTEROPERABILITY

It offers a multi-operating system option: Windows CE 5.0 that guarantees maximum flexibility and Windows Mobile 6 that offers complete compatibility.

FEATURES

- Microsoft Windows CE 5.0
- Microsoft Windows Mobile 6
- Intel PXA270
- Laser, Imager and Laser+RFID HF-ISO
 - 13.56 MHz data capture options
 - 1.5 m (5 ft) drop resistance
 - IP64 protection class
 - User-accessible memory slot
- Bluetooth® wireless technology, Wi-Fi® (CCX V3), and GSM/GPRS simultaneous communication options
- Large high visibility QVGA color graphic display with touch screen
- Ergonomic, lightweight and robust

APPLICATIONS

- Field Force Automation
- Parcel pick-up & delivery
- Route accounting
- Warehouse management: inventory/picking/shipping/receiving
- Shelf replenishment/Price management
- Healthcare administration

Specifications

PHYSICAL CHARACTERISTICS

DIMENSIONS	176 x 90 x 28 mm (6.9 x 3.5 x 1.1 in) minimum
WEIGHT	424 to 463 g (14.9 to 16.3 oz) depending on model (incl. battery)
DISPLAY	Transflective TFT daylight readable color display, 240 x 320 pixels, 3.5 in. (89 mm) diagonal, 65 K colors, backlight, touch screen
KEYBOARD	27 rubber keys, triple scan key, backlit keyboard standard
OPERATING TEMPERATURE	-10 °C to 50 °C (14 °F to 122 °F)
STORAGE TEMPERATURE	-20 °C to 70 °C (-4 °F to 158 °F)
DROP RESISTANCE	Withstands drops from 1.5 m (5 ft) onto concrete
ENVIRONMENTAL SEALING	IP64 standard for water and dust resistance

SYSTEM

OPERATING SYSTEM	Microsoft Windows CE 5.0 / Microsoft Windows Mobile 6
MICROPROCESSOR	Intel® XScale PXA 270 @ 520 MHz
SYSTEM RAM MEMORY	128 MB
SYSTEM FLASH MEMORY	128 MB (including Backup directory for user data & programs permanent storage)
EXPANSION SLOTS	Mini Secure Digital (user accessible)
REAL-TIME CLOCK	Time and date stamping under software control
POWER SUPPLY	Removable battery pack with rechargeable Li-Ion batteries; 7.4 V 1070/1800 mAh (7.9/13.3 Watt hours); Local connection for fast battery charging

COMMUNICATIONS

INTERFACES	Electrical: integrated RS232 up to 115.2 Kbps USB: integrated full speed USB (USB 1.1)
LOCAL AREA NETWORK	IEEE 802.11b/g (Wi-Fi®); CCX V3 Integrated module
WIDE AREA NETWORK	Frequency range: Country dependent, typically 2.4 - 2.5 GHz GSM/GPRS (900/1800/1900 MHz); user-accessible SIM socket for GSM/GPRS Integrated module
PERSONAL AREA NETWORK (PAN)	IEEE 802.15 Bluetooth® wireless technology Integrated module

READING OPTIONS

LASER CHARACTERISTICS

SCANNING RATE	35 ±5 scans/sec
MINIMUM RESOLUTION	0.127 mm (5 mils)
DEPTH OF FIELD	3 to 70 cm (1.2 to 27.6 in), depending on bar code density
SCAN ANGLE	42° ± 2
BAR CODES	EAN/UPC, Code 39, 2/5 Codes, Plessey, Codabar, Code 128, EAN128, MSI, Code 93, Code 11

RFID CHARACTERISTICS

OPERATING FREQUENCY	13.56 MHz
RFID TAGS	EMS HMS Series, EMS LRP ISO15693 Series, Philips Mifare Classic 1k (read/write block only), Philips Mifare Classic 4k (read/write block only), Philips Mifare Ultralight, Texas Tag-It HF-I ISO15693, Infineon ISO15693, I-CODE SLI ISO15693
OPERATING RANGE	Up to 10 cm

IMAGER CHARACTERISTICS

AIMING	Visible laser diode @ 650 nm
MAX. RESOLUTION	Linear: 5 mils; datamatrix: 6.6 mils
READING FIELD	21.8° (H) x 16.7° (V)
PRINT CONTRAST VALUE	PCS=23% (min.)
READING ANGLE	Skew ±40°; Pitch ±35°; Tilt 360°
SENSOR	640 X 480 element, 2D CMOS array
LASER CLASSIFICATION	Class 2 (IEC 825-1 and CDRH)
BAR CODES	1D: Interleaved 2 of 5, Code 39, Code 128, EAN 128, Code 93, UPC/EAN/JAN, Codabar 2D: PDF417, DataMatrix, QR, RSS codes POSTAL CODES: POSTNET, PLANET, Japan Post, Australia Post, KIX Code, Royal Mail Code (RM4SCC) 640 x 480 VGA (8 bit gray scale) 320 x 240 CIF (8 bit gray scale)
IMAGE & SIGNATURE CAPTURE	

SOFTWARE

DEVELOPMENT

Windows CE/Mobile SDK™
DL Mobility Developer Assistant™
MCL-Collection™
Java Virtual Machine (Crème)

CONFIGURATION & MAINTENANCE

Wavelink® Avalanche™
DL Application Manager™
DL Mobile Director Enterprise™

UTILITIES

Terminal Emulation	Locked Web Browser™
DL-TCL™	Vo-CE™
DL Keep Connecting™	



Caution:
Laser Radiation -
do not stare into
beam

Accessories



Single Cradle and Multiple Battery Charger



Vehicle Cradle



Multiple Cradle (Ethernet)

Please refer to user manual available at www.mobile.datalogic.com/manuals for information on product use limitation.
For more information see: www.mobile.datalogic.com/datalogicJet

Not available in the U.S.

Product and Company names and logos referenced may be either trademarks or registered trademarks of their respective companies. We reserve the right to make modifications and improvements.

Printed in the Italy, November 2007